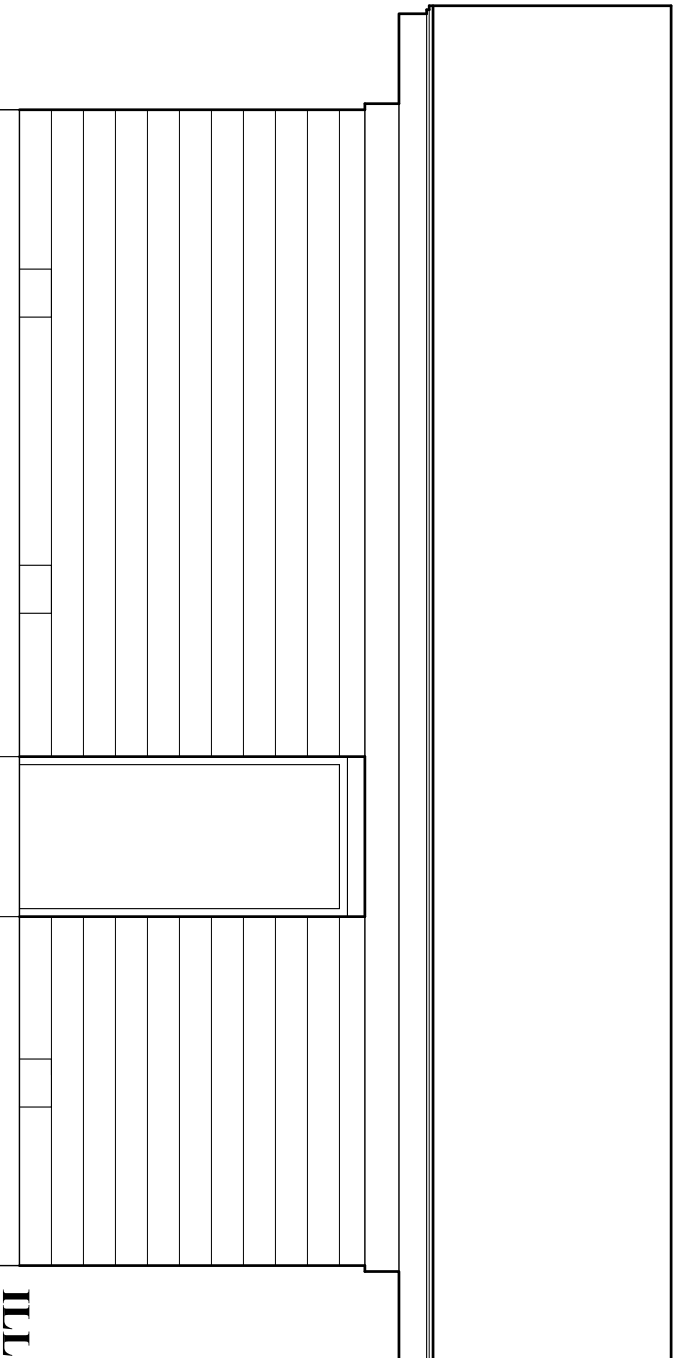
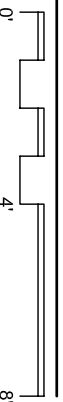


**BATH HOUSE SOUTH ELEVATION 2-12-2013**



**BATH HOUSE WEST ELEVATION 2-12-2013**

Scale: 1/4" = 1'-0"



Architecture  
and  
Conservation P.C.  
1008 S. Home Avenue  
Oak Park, Illinois 60304  
708-358-1020  
Christopher Goode, Architect  
President/Architect  
chris@archandcons.com

**ILLINOIS YEARLY MEETING**  
**Quaker Lane**  
**McNabb, IL 61335**